



---

## VIMEK LINEUP

Market-leading forest machines for modern thinning and forest care that are compact, durable, reliable. Forestry machines that make an impression, not an impact.

No. 1 in compact class

# 870.2

Discover Vimek 870.2: a modern forwarder designed for thinning operations in professional forestry. Combining power, agility, and driver comfort in every detail. Ensuring sustainable forestry with high productivity and low ground pressure.

## ➤ 6WD or 8WD

Choose six-wheel drive for a smooth and agile machine, or eight-wheel drive for maximum stability and ground bearing capacity.



## ➤ Load capacity

Robust trailer with a 7000 kg load capacity.

Available with different trailer lengths and configurable bunk positions and quantities to match different assortments

## ➤ Crane

Choose between FC4ET and FC5DT.

Cranes with high lifting power and smooth, accurate handling. With ICC as optional feature.

Cranab FC4ET - 6,7 m reach.

Single telescopic boom.

Cranab FC5DT - 8,3 m reach.

Double telescopic boom.

## ➤ Operator comfort

The NG platform offers a spacious and comfortable cab with a modern and user-friendly interface.

## ➤ DSS - Dual steering System

Hydraulic articulated steering and bogie steering in the trailer.

Providing an agile steering angle with excellent traction. With all wheels rotating at the same speed, ground impact is minimized, resulting in less damage to the terrain.



## ICC - Intelligent Crane Control

Improve crane operations for easier, quicker and more intuitive control.

## 870.2

### ➤ Dasa Drive integrated CAN-based control system

All machine functions are controlled and monitored via one central display.

### ➤ Vimek Connect

Start the parking heater remotely with your phone (iPhone or Android), or remotely connect to the machine for trouble shooting and real-time operational data. The Vimek Connect service includes remote support, allowing to connect to the machine without the need to travel to the site.



### ➤ Powerful and fuel efficient CAT engine

Complies with the latest emission standards.  
No need for DEF fluids.

### ➤ Low seating position

Provides excellent visibility beneath the treetops and reduces whole-body vibrations.



## Technical specifications

### Engine

Model	CAT C2.2
Power	55kW @ 2400 rpm
Torque	270Nm @1600 rpm
Emission standard	EU Stage V U.S EPA Tier 4f

### Crane and grapple

Cranes	FC4ET	FC5DT
Max reach	6,7 m	8,3 m
Gross lifting torque	42 kNm	51 kNm
Gross slewing torque	11 kNm	13 kNm
Grapples	Cranab CR19 HSP 015 HSP 017	

### Load capacity

Load capacity	7000 kg		
Trailer	Standard center frame	Long center frame	Extension
Loading length	3,2 m	3,5 m	Center frame + 0,8 m
Loading area	2,65 m <sup>2</sup>		

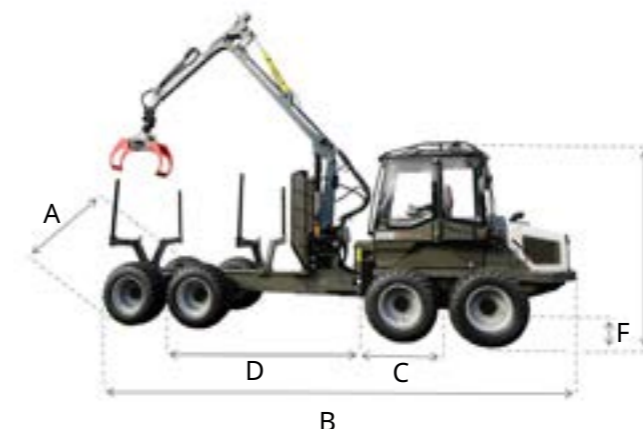
Please note that specified dimensions are theoretical values and may vary due to manufacturing tolerances and choice of equipment.

The machine's weight is also affected by the selected equipment and may therefore vary.

We reserve the right to make changes to specifications and design without prior notice.

All Vimek forwarders are possible to register as heavy off-road vehicles in Sweden, allowing them to operate on public roads.

## Technical specifications



### Dimensions

Dimensions applies to both configurations 6WD and 8WD		
A Width, max	2,2 m / 2,3 m / 2,4 m (Wheels 500 / 550 / 600)	
B Length	7,5 - 8,9 m	
C Length, front axle to middle joint	1,34 m	
D Length, middle joint to rear axle	3,2 m (standard center frame) / 3,5 m (long center frame)	
E Transport height	2,9 m	
F Ground clearance	47 cm (38 cm under bogie boxes)	
Steering angle middle joint	43°	
Steering angle bogie	10°	
Steering angle total (max)	53°	
Machine weight (from)	6WD 7000 kg	8WD 7800 kg

### Hydraulics

Hydac crane hydraulic system	
Hydraulic flow	120 l/min @ 2000 rpm

### Transmission

Bosch hydraulic system with Bodas software	
Transmission	Hydrostatic mechanical
Driving speed	0-18 km/h (2 gears) - standard gear ratio 0-16 km/h (2 gears) - low gear ratio
Tractive Force	75 kN - standard gear ratio 85 kN - low gear ratio
Differential lock	Front and rear
Steering	Hydraulic steering in center joint and bogie steering in trailer

### Electrical system

Voltage	12 V
Battery capacity	142 Ah
Alternator	120 A
Levers	Standard levers or MCI levers

## Equipment

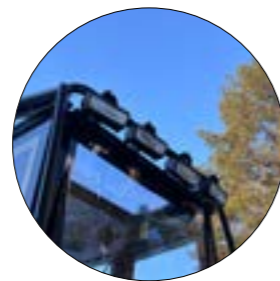
- 6WD / 8WD
- Wheels 500 / 550 / 600
- Chains / Tracks
- DSS - Dual Steering System (std)
- LED Standard / LED Large
- Work lights trailer
- Road light kit including mirrors
- Power outlet for warning lights
- Front view camera
- Camera in trailer
- Reverse sound alarm
- Vimek Connect (included 3 years)
- Map program GIS software
- Forwarder software F30 (std)
- PC 12" / 10" display / 5" extra display
- Standard levers / MCI levers
- Central lubrication on machine
- Central lubrication on crane
- Sun blinds
- Sit right
- Chair options
- Sprinkler system / Fire extinguisher
- Service kit
- Tool kit



8WD



6WD



LED Large  
10 roof lights + 2 lights on trailer



LED Standard  
6 roof lights



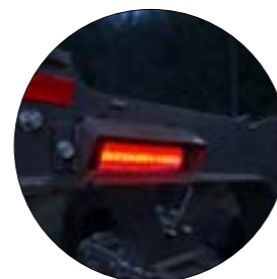
Front view camera



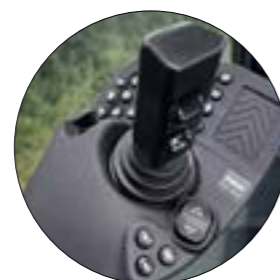
Camera in trailer  
Work lights trailer



Road lights including mirrors  
and work lights



Work lights



MCI levers



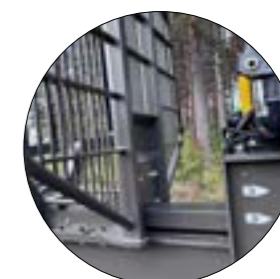
Standard levers

## Equipment

- Crane FC4ET / FC5DT
- ICC - Intelligent Crane Control
- Hydraulic crane damper (std)
- Radio controlled winch on crane
- Work step on slewing cylinder
- Extensions trailer for different lengths
- Sorting pins trailer 1pcs / 2pcs
- Load bunks with poles 2pcs / 3pcs / 4pcs
- Hitch trailer (3 ton)
- Grapple support on trailer
- Movable headboard
- Grapple Cranab CR19
- Grapple HSP 015 / HSP 017
- Single swing damper
- Chainsaw holder
- Bio grapple CE23
- Diesel heater
- Electrical oil filling pump (std)
- Vacuum pump for hydraulic oil tank
- Filling pump diesel
- Front protection with tow point
- Branch deflector
- Storage box side load carrier
- Food can heater in cabin
- Clear coat
- Light gray engine hood / Dark engine hood



Sorting pins



Movable headboard



Front protection with  
tow point and  
light gray engine hood



Food can heater in cabin



Sit right  
Automatically nivelates  
the angle of the chair.



Branch deflector and  
Dark engine hood



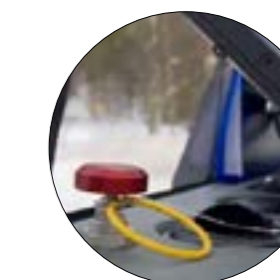
Storage box side load carrier



PC 12" with touch display  
Can be combined with an extra 10"  
display. The 10" display can be used  
as the main display.



HD camera



Sprinkler system  
Detection loops in the machine that  
automatically activates the sprinkler system  
in the event of a fire.

## 470

Discover Vimek 470: a modern harvester designed for thinning operations in professional forestry. Combining power, agility, and driver comfort in every detail. Ensuring sustainable forestry with high productivity and low ground impact.

### ➤ 6WD or 4WD

Choose four-wheel drive for a smooth and agile machine, or six-wheel drive for maximum stability and flotation capacity.



### ➤ Dasa Forester bucking system

Dasa H50 / H60 / H70

### ➤ Operator comfort

The NG platform offers a spacious and comfortable cab with a modern and user-friendly interface.

### ➤ Cranes

Choose between Mowi P50 or Mowi P61T. Cranes with high lifting capacity and smooth, accurate handling.

Mowi P50 - 6,3m reach.

Mowi P61T - 7,5m reach. Telescopic boom.



### ➤ DSS - Dual steering system

Hydraulic articulated steering and steering in the front drive axle.

Providing an agile steering angle with excellent traction. With all wheels rotating at the same speed, ground impact is minimized, resulting in less damage to the terrain.

### ➤ Auto-leveling crane tilt

+/- 15° compensation.

### ➤ Harvester head

Available with Keto 42 or Logmax 2000T.

Both possible with all bucking systems available for Vimek 470.



### Logmax 2000T

Feeding system: Feed rollers

Max cutting diameter: 41 cm

Weight: 420 kg

Optional with stump treatment

### Keto 42

Feeding system: Tracks

Max cutting diameter: 42 cm

Weight: 373 kg

Optional with stump treatment and colour marking.



# 470

## ➤ Dasa Drive integrated CAN-based control system

All machine functions are controlled and monitored via one central display.

## ➤ Vimek Connect

Start the parking heater remotely with your phone (iPhone or Android), or remotely connect to the machine for trouble shooting and real-time operational data. The Vimek Connect service includes remote support, allowing to connect to the machine without the need to travel to the site.



## ➤ Powerful and fuel efficient CAT engine

Complies with the latest emission standards.  
No need for DEF fluids.



## Technical specifications

### Engine

Model	CAT C2.2
Power	55kW @ 2400 rpm
Torque	270Nm@1600 rpm
Emission standard	EU Stage V U.S EPA Tier 4f

### Crane

Cranes	P50	P61T
Max reach	6,3 m	7,5 m
Gross lifting torque	45 kNm	52 kNm
Gross slewing torque	15 kNm	15 kNm

### Harvester head

Model	Keto 42	Logmax 2000T
Feeding system	Tracks	Feed rollers
Max cutting diameter	42 cm	41 cm
Weight	373 kg	420 kg

### Bucking system

Model	H50	H60	H70
System type	Prio bucking system	Prio bucking system	Value bucking system
Operating system	Linux	Windows	Windows
Standard	Stanford		

Please note that specified dimensions are theoretical values and may vary due to manufacturing tolerances and choice of equipment.

The machine's weight is also affected by the selected equipment and may therefore vary.

We reserve the right to make changes to specifications and design without prior notice.

## ➤ Low seating position

Provides excellent visibility beneath the treetops and reduces whole-body vibrations.

## Technical specifications



### Dimensions

Wheel configuration	4WD	6WD
A Width, max	2,2 m / 2,3 m (wheel 500 / 600)	2,2 m / 2,3 m / 2,3 m (wheel 500 / 550 / 600)
B Length	5,2 m	5,67 m
C Length, rear axle to middle joint	1,33 m	1,33 m
D Length, middle joint to front axle	1,34 m	1,34 m
E Transport height	2,96 m	2,96 m
F Ground clearance	48 cm	48 cm
Steering angle middle joint	40°	40°
Steering angle front axle	30°	-
Steering angle total (max)	70°	40°
Machine weight (from)	6500 kg	7300 kg

### Hydraulics

Hydac crane hydraulic system	
Hydraulic flow	144 l/min @ 2000 rpm

### Transmission

Bosch Rexroth hydraulic system and Bodas software	
Transmission	Hydrostatic mechanical
Driving speed	0-18 km/h (2 gears)
Tractive Force	75 kN
Differential lock	Front and rear
Steering	4WD: Hydraulic articulated steering in center joint and front axle. 6WD: Hydraulic articulated steering in center joint.

### Electrical system

Voltage	12 V
Battery capacity	142 Ah
Alternator	120 A
Levers	Standard levers or MCI levers.

Equipment

4WD / 6WD  
 Wheels 440 / 500 / 550 / 600  
 Chains / Tracks on bogie (6WD)  
 DSS - Dual Steering System (std)

Keto 42

- optional with stump treatment  
 - optional with color marking

Logmax 2000T

- optional with stump treatment

Electronic caliper

Saw bar holder

Single or double swing damper

Map program GIS software

PC 12" / 10" display / 5" extra display

Dasa H50 / H60 / H60

Standard levers / MCI levers

Vimek Connect (included 3 years)

Long range tank (60 l)

- with transfer pump

Diesel heater

Electrical oil filling pump (std)

Vakuumpump hydraulic oil tank

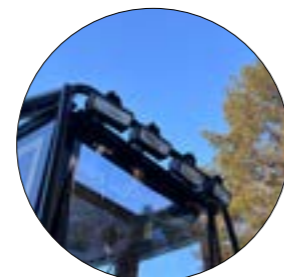
Filling pump diesel



4WD



6WD



LED Large  
10 roof lights + 2 lights on trailer



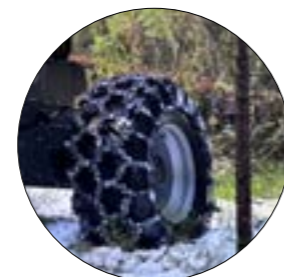
LED Standard  
6 roof lights



MCI levers



Standard levers



Chains  
Tracks on bogie (6WD)



Long range tank  
with transfer pump



Rear view camera



HD camera

Equipment

Crane P50  
 Crane P61T (with extension)  
 Hydraulic crane damper (std)

Rear view camera (hood side)  
 Reverse sound alarm

Lubrication on machine  
 Central lubrication on crane

LED Standard / LED Large  
 Power outlet for warning lights

Clearcoat  
 Light gray hood / Dark hood

Food can heater in cabin  
 Front protection with tow point

Branch deflector  
 Storage box side load carrier

Sun blinds  
 Sit right

Sprinkler system  
 Fire extinguisher

Service kit  
 Tool kit



P61T Crane  
- recommended with 6WD  
wheel setup



P50 Crane



Front protection with tow point  
Light gray engine hood



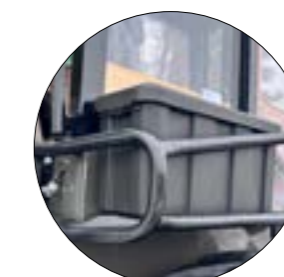
Food can heater in cabin



Sit right  
Automatically nivelates  
the angle of the chair.



Branch deflector  
Dark engine hood



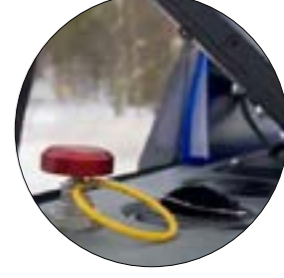
Storage box side load carrier



PC 12" with touch display  
Can be combined with an extra 10"  
display. The 10" display can be used  
as the main display.



Electronic caliper



Sprinkler system  
Detection loops in the machine that  
automatically activates the sprinkler system  
in the event of a fire.

# 404 T8

Vimek's most agile harvester.

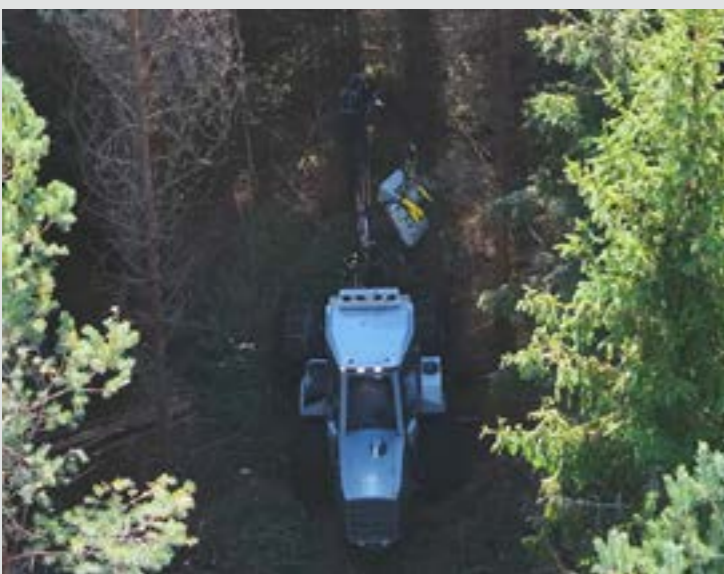
The most compact harvester on the market, designed to give you the ideal conditions for gentle and efficient thinning. On the forest's own terms.

## ➤ Powerful and fuel efficient CAT engine

Complies with the latest emission standards.  
No need for DEF fluids.

## ➤ Low seating position

Provides excellent visibility beneath the treetops and reduces whole-body vibrations.



## ➤ Dual steering

Articulation steering in both the center joint and in the front axle, the machine delivers the sharpest steering angle in the market. The result is exceptional maneuverability and smooth handling, making it easy to navigate through tight forest stands.

## ➤ Harvester head

Keto Forst V4  
Nisula 325H

## ➤ Crane

Mowi 2046 - 4,6m reach

## ➤ Dasa Forester bucking system

Choose between H50 and H70.



## ➤ Harvester head

Available with Keto Forst Supreme V4 or Nisula 325H.

Both possible with all bucking systems available for Vimek 404 T8.



### Keto Forst Supreme V4

Feeding system: Tracks  
Max cutting diameter: 30 cm  
Weight: 296 kg

Optional with stump treatment and colour marking.

### Nisula 325H

Feeding system: Feed rollers  
Max cutting diameter: 34 cm  
Weight: 285 kg

Optional with stump treatment



## Equipment

- Crane Mowi 2046
- Crane damping system
- Keto Forst V4 / Nisula 325H
- Stump treatment system
- Color marking
- Electronic caliper
- Chainsaw holder
  
- Medium LED lightning
- Large LED lightning
- Radio with Bluetooth
- Pneumatic chair
- Sun blinds
- Air conditioning
  
- Sprinkler system / Fire extinguisher
- Filling pump hydraulic oil
- Refueling pump diesel
- Diesel engine heater
- Callstarter diesel engine heater
  
- PC 12"
- Rear camera
  
- Wheel chains 500/60-22.5 or 405/70-24
  
- Vimek C12 clearing head
- Vimek Clamshell bucket
- Service kit
- Tool kit

## Technical specifications

Engine	CAT C2.2
Power	55kW @ 2400 rpm
Torque	270Nm @ 1600rpm
Emission standard	EU Stage V U.S EPA Tier 4f
Steering angle	80°
Transmission	Hydrostatic / mechanical
Tyres	500/60-22.5 or 405/70-24
Hydraulic	135 l/min
Ground clearance	40 cm
Wheel base	2,1 m
Length	4,6 m
Width	1,8 m or 2,05 m
Weight (from)	4700 kg
Crane	Vimek Mowi 2046   Max reach: 4,6 m Vimek - Mowi P25   Max reach: 5,2 m
Bucking system	Dasa H50/H70

### HARVESTING HEAD

<b>Keto Forst Supreme V4</b>	Weight: 296 kg Max. diameter: 300 mm 10 cc saw engine
<b>Nisula 325H (option)</b>	Weight: 285 kg Max. diameter: 340 mm 10 cc saw engine

Please note that specified dimensions are theoretical values and may vary due to manufacturing tolerances and choice of equipment.

The machine's weight is also affected by the selected equipment and may therefore vary.

We reserve the right to make changes to specifications and design without prior notice.



404 T8

# 404 T8 Duo

Vimek 404 T8 Duo combines the best of two worlds. It combines a harvester and a forwarder in one machine. Providing efficiency and versatility throughout the entire process, from harvesting to forwarding.

## ➤ Powerful and fuel efficient CAT engine

Complies with the latest emission standards.  
No need for DEF fluids.

## ➤ Low seating position

Provides excellent visibility beneath the treetops and reduces whole-body vibrations.



## ➤ Dasa Forester bucking system

Choose between H50 and H70.

## ➤ Quick machine transformation

The switch from harvester to forwarder takes around 30 minutes using simple tools.

<https://www.youtube.com/watch?v=jPlmTv7XJQE>



## ➤ Dual steering

Articulated steering in both the center joint and front axle provides excellent tracking and maneuverability, ensuring smooth handling in tight forest stands.

## ➤ Load capacity - 5500 kg

## ➤ Crane

Vimek - Mowi P25 - 5,2 m reach

## ➤ Tilt grapple

Mecanil T160 G2



## ➤ Harvester head

Available with Keto Forst Supreme V4 or Nisula 325H.

Both possible with all bucking systems available for Vimek 404 T8 Duo.



### Keto Forst Supreme V4

Feeding system: Tracks  
Max cutting diameter: 30 cm  
Weight: 296 kg

Optional with stump treatment and colour marking.

### Nisula 325H

Feeding system: Feed rollers  
Max cutting diameter: 34 cm  
Weight: 285 kg

Optional with stump treatment



## Equipment

- Crane Mowi P25
- Crane damping system
- Keto Forst V4 / Nisula 325H
- Stump treatment system
- Color marking
- Electronic caliper
- Chainsaw holder
  
- Medium LED lightning
- Large LED lightning
- Radio with Bluetooth
- Pneumatic chair
- Sun blinds
- Air conditioning
  
- Sprinkler system / Fire extinguisher
- Filling pump hydraulic oil
- Refueling pump diesel
- Diesel engine heater
- Callstarter diesel engine heater
  
- PC 12"
- Rear camera
  
- Wheel chains 500/60-22.5 or 405/70-24
  
- Vimek C12 clearing head
- Vimek Clamshell bucket
- Service kit
- Tool kit

## Technical specifications

<b>Engine</b>	CAT C2.2
<b>Power</b>	55kW @ 2400 rpm
<b>Torque</b>	270Nm @ 1600rpm
<b>Emission standard</b>	EU Stage V & U.S EPA Tier 4 Final
<b>Steering angle</b>	80°
<b>Transmission</b>	Hydrostatic/mechanical
<b>Tyres</b>	500/60-22.5 or 405/70-24
<b>Hydraulic</b>	135 L/min
<b>Ground clearance</b>	40 cm
<b>Wheel base</b>	2,1 m
<b>Length</b>	4,6 m 9,25 m including trailer
<b>Width</b>	1,8 m or 2,05 m
<b>Weight</b>	4700 kg excluding trailer
<b>Load capacity</b>	5500 kg
<b>Crane</b>	Mowi P25 Max reach 5,2 m
<b>Bucking system</b>	Dasa H50/H70

### HARVESTING HEAD

<b>Keto Forst Supreme V4</b>	Weight: 296 kg Max. diameter: 300 mm 10 cc saw engine
<b>Nisula 325H (option)</b>	Weight: 285 kg Max. diameter: 340 mm 10 cc saw engine

Please note that specified dimensions are theoretical values and may vary due to manufacturing tolerances and choice of equipment.

The machine's weight is also affected by the selected equipment and may therefore vary.



We reserve the right to make changes to specifications and design without prior notice.



# 610.4

Fourth generation of the popular forwarder.  
The Vimek 610.4 is our 6-wheel mid-size forwarder - compact, efficient, and ideal for first thinning operations.  
With low ground pressure and excellent maneuverability, it is designed for gentle and sustainable forestry.

## ➤ Powerful and fuel efficient CAT engine

Complies with the latest emission standards.  
No need for DEF fluids.

## ➤ Low seating position

Provides excellent visibility beneath the treetops and reduces whole-body vibrations.



## ➤ Robson drive

Simple technology with low weight.

## ➤ Load capacity - 5000 kg

High load ratio with load capacity more than its own weight.

## ➤ Load sensing hydraulics

Provides excellent crane handling and control.



## ➤ Crane

Choose between Mowi P25 and P25T.  
Cranes with high lifting power and smooth, accurate handling.

Mowi P25

Mowi P25T (with extension)

## ➤ Powerful hydrostatic mechanical transmission

With different drive modes.

## Equipment

Boogie tracks, trailer

Wheel chains 500/60-22.5  
or 405/70-24

Medium/ Large LED lights

Radio with Bluetooth

Chair options

Sun blinds

Rear camera

Callstarter diesel engine heater

Sprinkler system

Fire extinguisher

Air conditioning

Filling pump hydraulic oil

Refueling pump diesel

Diesel engine heater

Crane with extension

Hydraulic radio controlled winch

Crane damping system

Energy wood head

Chainsaw holder

Bunks with poles 2pcs /3pcs / 4pcs

Service kit

Tool kit

## Technical specifications

Engine	CAT C2.2
Power	55kW @ 2400 rpm
Torque	270Nm @ 1600rpm
Emission standard	EU Stage V & U.S EPA Tier 4f
Transmission	Hydrostatic/mechanical
Tyres	Front: 500/60-22.5 or 405/70-24 Rear: 400/60-15.5
Hydraulic flow	120 l/min @ 175 bar
Ground clearance	40 cm
Length	Standard: 6,9 m   Long: 7,6 m
Width	1,9 m or 2 m
Weight	From 4900 kg
Load capacity	5000 kg
Loading area	Loading length 3,3 m with load space 1,85 m <sup>2</sup> Loading length 4 m with load space 1,65 m <sup>2</sup>

## CRANE & GRAPPLE

Vimek - Mowi P25	Range: 5,2 m Lifting capacity: 400 kg at 5,2 m
Vimek - Mowi P25T	Range: 6,6 m Lifting capacity: 250 kg at 6.6 m
Grapples	FTG 0.16 (std) Mecanil tilt grapple

Please note that specified dimensions are theoretical values and may vary due to manufacturing tolerances and choice of equipment.

The machine's weight is also affected by the selected equipment and may therefore vary.

We reserve the right to make changes to specifications and design without prior notice.

All Vimek forwarders are possible to register as heavy off-road vehicles in Sweden, allowing them to operate on public roads.



# 606 TT SE

Low impact forwarder, with a long history and reliable design. Built on simple and proven technology. Vimek 606 TTSE is the smallest forwarder in the Vimek lineup. Featuring high ground clearance and low ground pressure, offering excellent mobility.

## ➤ Agile with low impact

Gentle to the environment thanks to its low weight.



## ➤ Disconnectable wheel drive

Enables transportation on a dolly trailer.

## ➤ Articulated center with hydraulic lock

Stable in all modes so you don't have to hassle with support legs.

## ➤ Kubota engine

Simple technology with non complicated electronic. Service friendly and with low fuel consumption.

## ➤ Load capacity - 3000 kg

High load ratio with load capacity more than its own weight.

## ➤ Crane Mowi 2046

4,6 m reach.  
Optional crane damping system.



## ➤ Robson drive

Simple technology with low weight.

Variable mechanical transmission with 4 gear positions and 3 ranges of speed (low, medium, and high).

## Equipment

- Pneumatic chair
- Sun blinds
- Air conditioning
- Radio with Bluetooth
- Rear view camera
- Diesel engine heater
- Callstarter diesel engine heater
- Electric engine heater
- Crane Mowi 2046
- Crane damping system
- Hydraulic radio controlled winch
- LED lights standard (6 pcs)
- LED lights crane
- Boogie tracks
- Wheel chains
- Grapple bucket attachment
- Energy wood head Nisula
- Fire extinguisher
- Roof bar with protective roof
- Load carrier cabin side
- Chainsaw holder
- Dolly trailer
- Service kit
- Tool kit

## Technical specifications

Engine	Kubota D 902-E 18 kW @ 3600 rpm
Engine emission standard	EU Stage V & U.S EPA Tier 4 Final
Transmission	Variable mechanical
Tyres	Front: 405/70-24 or 500/60-22,5 Rear: 400/60-15.5
Hydraulics	43 l/min @ 175 bar
Ground clearance	40 cm
Length	Standard: 6.20 m   Long: 6.70 m
Width	1.80 m
Weight	From 2,900 kg
Loading area	Loading area 3.0 m with cargo space 1.4 m <sup>2</sup>
Loading capacity	3 000 kg
Crane	<b>Vimek - Mowi 2046</b> Range: 4.60 m Lifting capacity: 4.6 m 375 kg
Grapple	FTG 0.16

Please note that specified dimensions are theoretical values and may vary due to manufacturing tolerances and choice of equipment.

The machine's weight is also affected by the selected equipment and may therefore vary.

We reserve the right to make changes to specifications and design without prior notice.

All Vimek forwarders are possible to register as heavy off-road vehicles, allowing them to operate on public roads.



606 TTSE

VIMEK

FBL97F



www.vimek.com



# VIMEK LINEUP

Follow us:



Vimek AB

Allan Jonssons väg 11 SE-922 31 Vindeln • Tel: +46 933-135 15 • info@vimek.se • sales@vimek.se